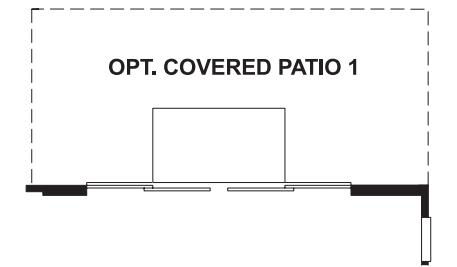
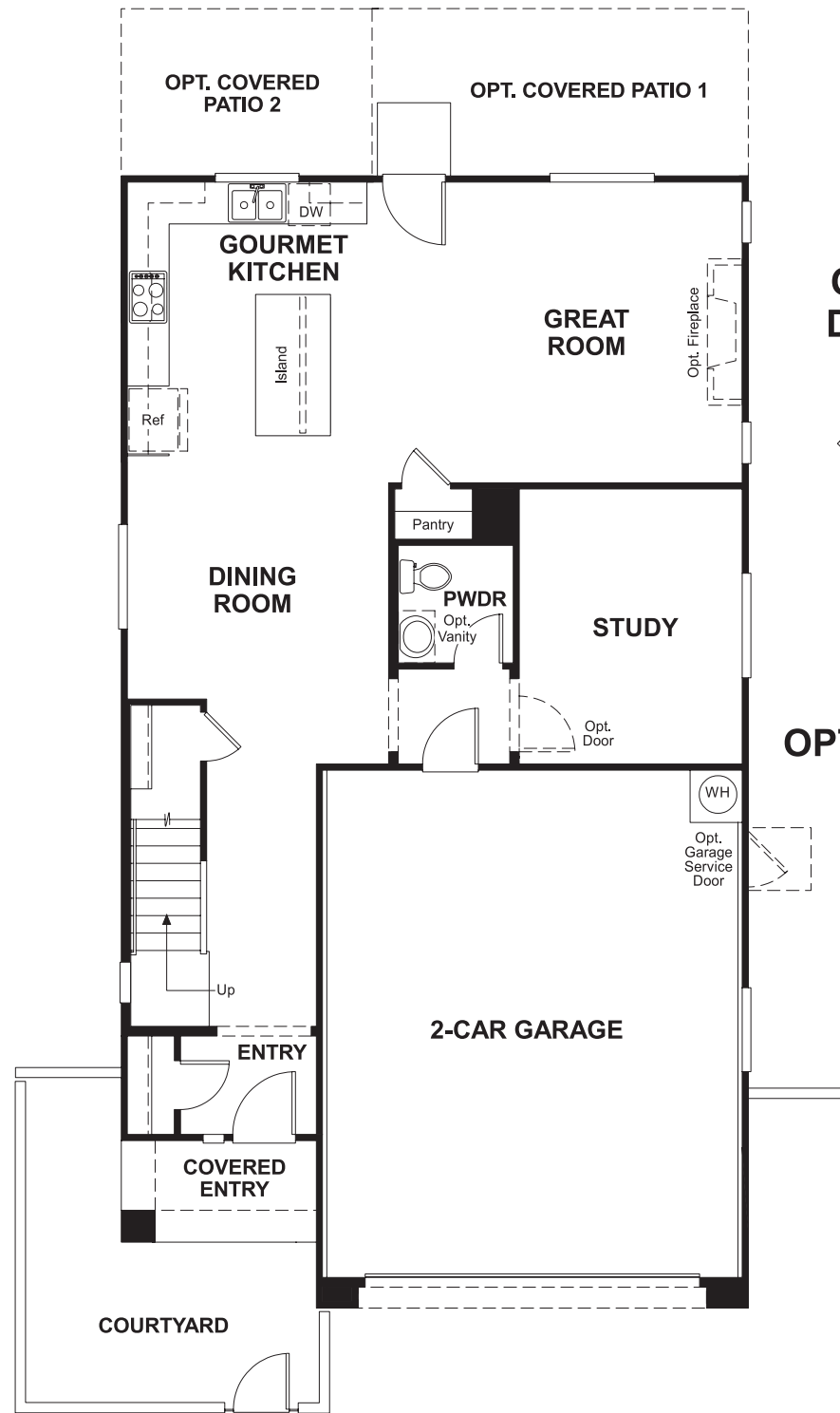
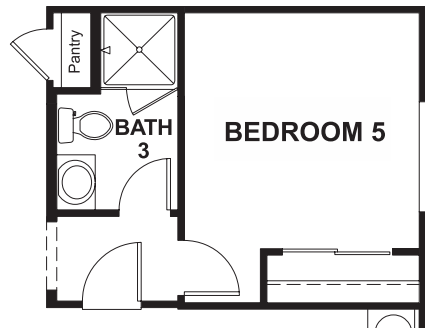


MAIN FLOOR

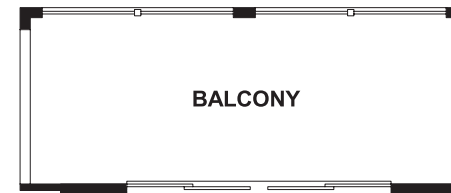
SECOND FLOOR



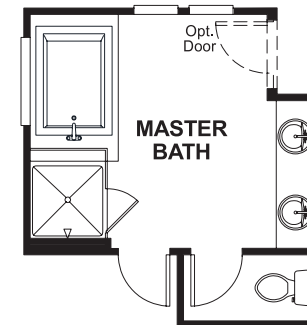
OPT. 12' CENTER-MEET DOOR AT GREAT ROOM



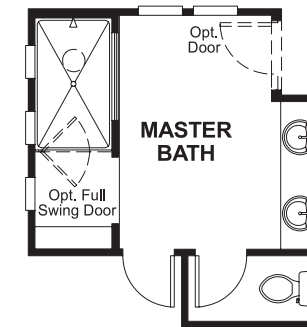
OPT. BEDROOM 5 W/ BATH 3



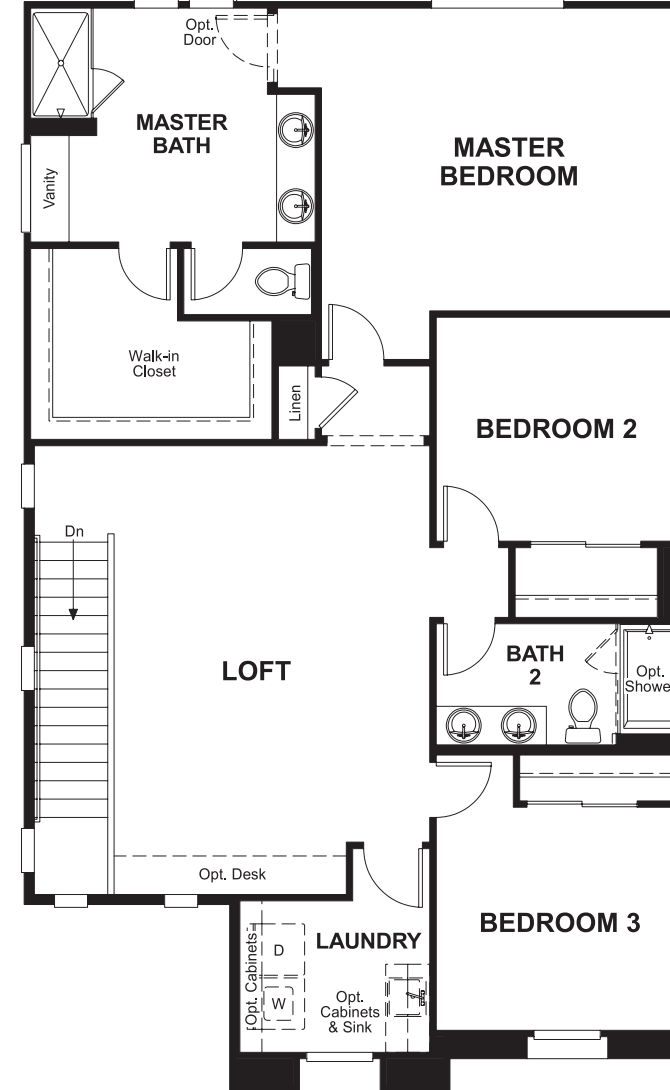
OPT. CENTER-MEET DOOR AT BALCONY



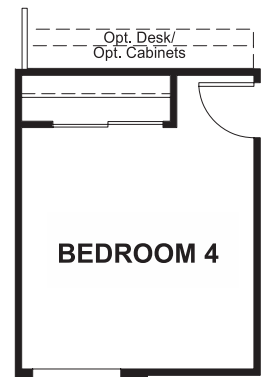
OPT. DELUXE MASTER BATH



OPT. WALK-IN SHOWER



OPT. SITTING AT MASTER BEDROOM



OPT. BEDROOM 4

THIS PLAN'S PROJECTED **HERS® INDEX = 60***
 Projected Rating Based on Plans – Field Confirmation required

How does this floor plan rate?
 Take a look: **100** = Standard new home+ **130** = Typical resale Home++
 The lower number, the better! Refer to the RESNET® HERS index brochure or go to www.RESNET.us and www.HERSindex.com

What's a HERS® Index? HERS stands for Home Energy Rating System, a system created by RESNET® to measure home energy efficiency. ^
 A Projected HERS index or rating is a computer simulation performed prior to construction by a third-party HERS rater using RESNET-accredited rating software, rated feature and specification data derived from home plans, features and specifications, and other data selected or assumed by the rater. The projected HERS index is approximate and is subject to change without notice. Actual results will vary.