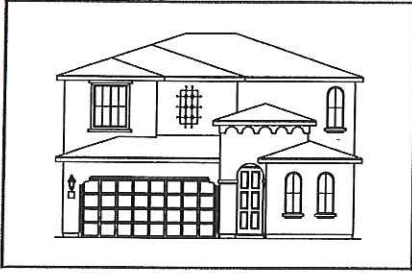


# Park Place

Broadway - 3510

Two Story • 2,367 Sq.Ft. • 3-5 Bedrooms • 2.5-3 Baths • Study • Loft • Dining Room • Covered Loggia • 2-Bay Garage



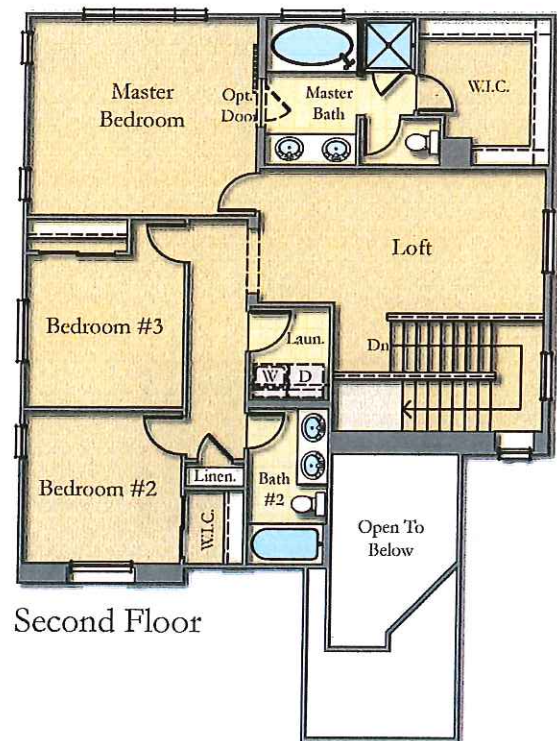
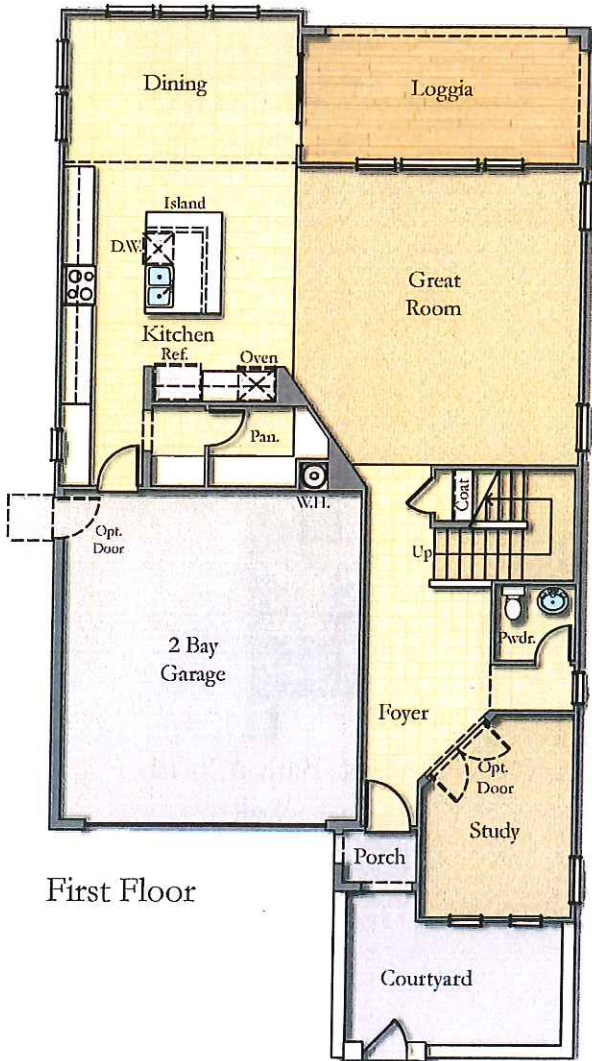
ELEVATION A



ELEVATION B



ELEVATION C

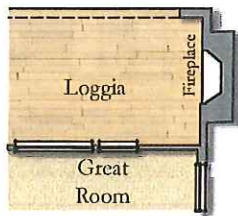


Woodside Homes reserves the right to change elevations, specifications, materials and prices without notice. All square footages are approximate. The availability of certain options is subject to construction status and schedule. Optional features may be predetermined and included at additional cost on select home sites. Renderings are artist's conception only.

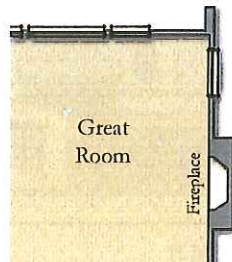
# Park Place

## Broadway - 3510

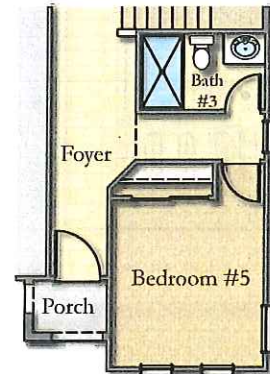
Two Story • 2,367 Sq.Ft. • 3-5 Bedrooms • 2.5-3 Baths • Study • Loft • Dining Room • Covered Loggia • 2-Bay Garage



Opt. Outdoor Fireplace

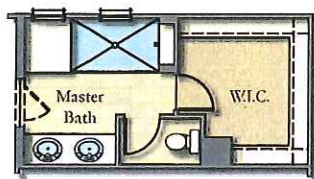


Opt. Fireplace At Great Room

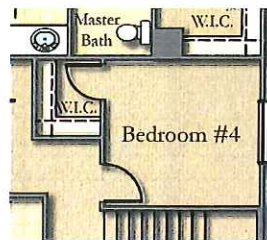


Opt. Bedroom #5  
And Bath #3

### First Floor Options



Opt. Master Bath



Opt. Bedroom #4



Opt. Bath #2 with  
Wall

### Second Floor Options

